

PGS Music Department



QUEEN & DAVID BOWIE

UNDER PRESSURE



S2 GROUP PERFORMING

WITHOUT note names.

PARTS

Keyboard
Glockenspiel
Ukulele
Guitar
Bass Guitar
Drum-kit

KEYBOARD

Under Pressure

Queen

Keyboard

4 D Intro D D

4 D D D

7 D D

9 5 D 4 4 A 3 4 G 3 3 2 1 A

13 D A G A

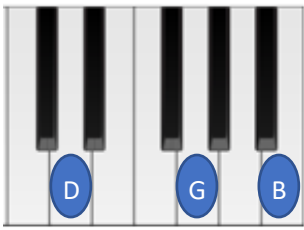
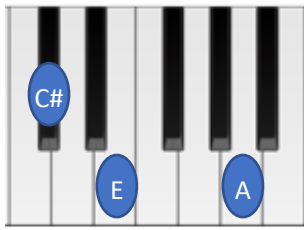
17 D A 5 5 G 2 3 1 D

Chords

D

A

G



GLOCKENSPIEL

Under Pressure

Queen

♩=120

Intro



7



12



16



GLOCKENSPIEL PART 2

Under Pressure

Queen

Intro

Glockenspiel 2



3



5



9



13



16



UKULELE MELODY

Under Pressure

Ukulele **D** **Intro** **D**

Ukulele **Intro**

Uke. **D** **D**

Uke.

Uke. **D** **D** **D**

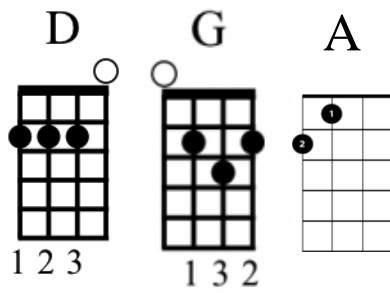
Uke.

Uke. **D** **D** **A**

Uke.

Uke.

UKULELE CHORDS



Play the melody in the Introduction.



Under Pressure

Queen

Ukulele 2

Ukulele 2

D Intro

Uke 2.

Uke 2.

D

Uke 2.

Uke 2.

D

Strumming Pattern starts here.

Uke 2. 8 D D A G 2

Uke 2. 5 5 5 5 5 0

Uke 2. 12 A D A G A

Uke 2. 17 D A G D

Detailed description: The image shows a musical score for Uke 2 in D major (two sharps). It consists of three systems of two staves each. The first system starts at measure 8 with a D chord. The melody in the treble clef consists of quarter notes: D4, E4, F#4, G4, F#4, E4, D4. The bass line in the bass clef consists of quarter notes: 5, 5, 5, 5, 5, 0. A vertical line at the end of measure 8 indicates the start of the strumming pattern. The second system starts at measure 12 with chords A, D, A, G, A. The third system starts at measure 17 with chords D, A, G, D. Above the first system, there are three square brackets representing the strumming pattern: one for the first measure (D), one for the second measure (D), and one for the third measure (A).

Strumming Pattern

4/4 ↓ γ ↓↑ γ ↑↑ | ↓ γ ↓↑ γ ↑↑ | ↓ γ ↓↑ γ ↑↑ | ↓ γ ↓↑ γ ↑↑ :||

1 + 2 + 3 + 4 +

Detailed description: The diagram shows a strumming pattern in 4/4 time. It consists of four measures, each containing a sequence of strums. The first measure has four strums: a downstroke (↓), a downstroke with a grace note (↓ γ), an upstroke with a grace note (↑ γ), and two upstrokes (↑↑). The second measure has the same sequence. The third measure has the same sequence. The fourth measure has the same sequence followed by a repeat sign. Below the first measure, the counts '1 + 2 + 3 + 4 +' are written, indicating the timing of the strums.

* Alternative rhythm for introduction.

Detailed description: The notation shows an alternative rhythm for the introduction. It consists of a quarter note, followed by an eighth note beamed to a sixteenth note, followed by another eighth note beamed to a sixteenth note, and finally a quarter rest.

GUITAR MELODY

Under Pressure

Queen

♩ = 120

Acoustic Guitar

D Intro

Acoustic Guitar

Intro

3

Gtr.

D

Gtr.

5

Gtr.

D

D

D

Gtr.

8 D D A 2

Gtr.

Gtr.



11 G A D

Gtr.

Gtr.



14 A G A

Gtr.

Gtr.



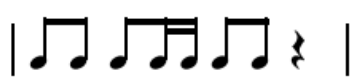
17 D A G D

Gtr.

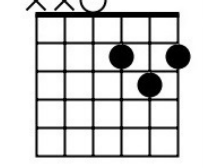
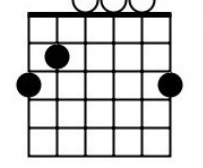
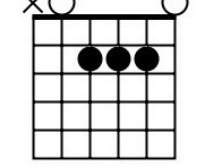
Gtr.



* Alternative rhythm for introduction.



GUITAR CHORDS

D	G	A
Re	Sol	La
		


Play the melody in the Introduction.



♩ = 120

Acoustic Guitar 2

D Intro




Acoustic Guitar 2

T 4/4 3-3-3-3-3 2

A 4/4


B 4/4



3

Gtr 2.

D



Gtr2.

D



5

Gtr 2.

D



Gtr2.

D



Strumming Pattern starts here.



8 D D A G 2

Gtr 2.

Gtr 2.

D

3 3 3 3 3 2



12 A D A G A

Gtr 2.

Gtr 2.

17 D A G D

Gtr 2.

Gtr 2.

Strumming Pattern

4/4

1 + 2 + 3 + 4 +

* Alternative rhythm for introduction.

BASS GUITAR

Under Pressure

Queen

Intro

Electric Bass

Intro

Electric Bass

T 4/4 0 0 0 0 0 0

A 4/4

B 4/4 0 0 0 0 0 0

3

E.Bs.

E.Bs.

0 0 0 0 0 0

0 0 0 0 0 0

5

E.Bs.

E.Bs.

0 0 0 0 0 0

0 0 0 0 0 0

0 0 0 0 0 0

E.Bs.

E.Bs.

12

E.Bs.

E.Bs.

17

E.Bs.

E.Bs.

* Alternative rhythm
for introduction.



DRUM-KIT

Under Pressure

Queen

♩ = 120

Drums



4

Open Hi-Hat



8



12



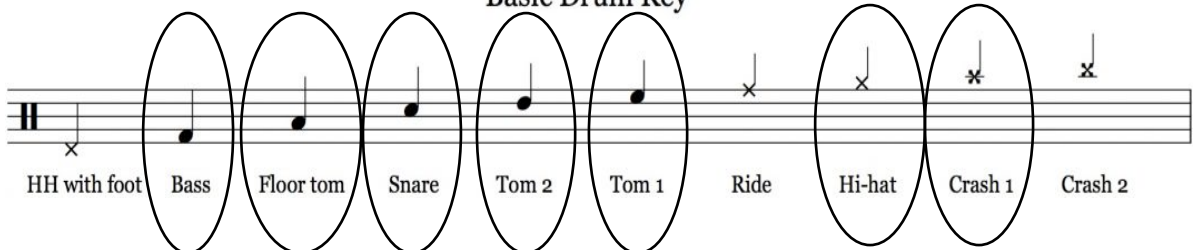
16



18



Basic Drum Key



HH with foot Bass Floor tom Snare Tom 2 Tom 1 Ride Hi-hat Crash 1 Crash 2

DRUM-KIT PART 2

Under Pressure

Queen

♩ = 120

Drums

4 Open Hi-Hat

8

12

16

18

Basic Drum Key

HH with foot Bass Floor tom Snare Tom 2 Tom 1 Ride Hi-hat Crash 1 Crash 2

PGS Music Department



QUEEN & DAVID BOWIE

UNDER PRESSURE



S2 GROUP PERFORMING

WITH note names.

PARTS

Keyboard
Glockenspiel
Ukulele
Guitar
Bass Guitar
Drum-kit

KEYBOARD

Under Pressure

Queen

Keyboard

4 ^D Intro D D

D D D D D D A D D D D D D A D D D D D D A

4 ^D D D

D D D D D D A D D D D D D A D D D D D D A

7 ^D D

D D D D D D A D D D D D D A

9 ⁵ ⁴ ⁴ ^A ³ ⁴ ^G ³ ³ ² ¹ ^A

G F# F# F# F# E E F# E E D D D D D B A G G

13 ^D A G A

G F# F# F# F# E E F# E D D D D D B A

17 ^D A 5 5 G 3 D

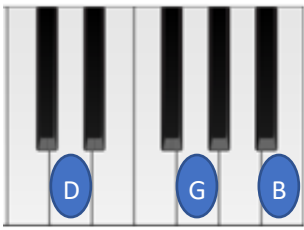
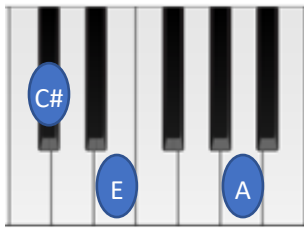
D D D A C# C# C# A D D A F# D

Chords

D

A

G



GLOCKENSPIEL

Under Pressure

Queen

♩=120

Intro

Glockenspiel



G A G A G A
D D D D D D

7



G F# F# F# F# E E F# E E D D D D D B

12



A G G G F# F# F# F# E E F# E D D D D D B

16



A D D D A C# C# C# A D D A F# D

GLOCKENSPIEL PART 2

Under Pressure

Queen

♩=120

Intro

Glockenspiel 2

D D D D D D A D D D D D D A D D D D D D A

4

D D D D D D A D D D D D D A D D D D D D A D D D D D D A

8

D D D D D D A D D D D C# C# C# C# D D D D C# C# C# C#
A A A A A A A A G G G G A A A A

13

D D D D C# C# C# C# D D D D
A A A A A A A A G G G G

16

C# A A A A C#
A D A D D

UKULELE MELODY

Under Pressure

Ukulele

Ukulele

Uke.

Uke.

Uke.

Uke.

The sheet music is arranged in four systems. Each system consists of a treble clef staff (labeled 'Ukulele' or 'Uke.'), a six-line bass clef staff (labeled 'Ukulele' or 'Uke.'), and a chord diagram row. The key signature is one sharp (F#) and the time signature is 4/4. The first system is an 'Intro' with a D chord. The second system is also an 'Intro' with a D chord. The third system has three measures, each with a D chord. The fourth system has three measures: the first with a D chord, the second with a D chord, and the third with an A chord. The bass staff in the fourth system includes fret numbers (3, 2, 2, 2, 0, 2, 2, 0) and a 7-measure rest.

11 G A D 2

Uke.

Uke.

14 A G A

Uke.

Uke.

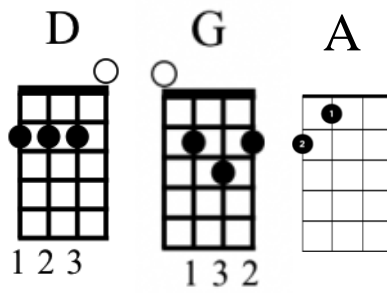
17 D A G D

Uke.

Uke.

* Alternative rhythm for introduction.

UKULELE CHORDS



Play the melody in the Introduction.

Under Pressure

Queen

Ukulele 2

Ukulele 2

Intro

Intro

Uke 2.

Uke 2.

3

Uke 2.

Uke 2.

5

Strumming Pattern starts here.

8 D D A G 2

Uke 2.

Uke 2.

5 5 5 5 5 0

12 A D A G A

Uke 2.

Uke 2.

17 D A G D

Uke 2.

Uke 2.

Strumming Pattern

4/4

1 + 2 + 3 + 4 +

* Alternative rhythm for introduction.

GUITAR MELODY

Under Pressure

Queen

♩ = 120

Acoustic Guitar

D Intro

Intro

Acoustic Guitar

3 3 3 3 3 2

3

Gtr.

D

Gtr.

3 3 3 3 3 2

5

Gtr.

D

D

D

Gtr.

3 3 3 3 3 2

8 D D A 2

Gtr.

Gtr.



11 G A D

Gtr.

Gtr.



14 A G A

Gtr.

Gtr.



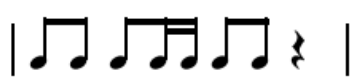
17 D A G D

Gtr.

Gtr.



* Alternative rhythm for introduction.



Strumming Pattern starts here.



8 D D A G 2

Gtr 2.

Gtr 2.

D

3 3 3 3 3 2



12 A D A G A

Gtr 2.

Gtr 2.

17 D A G D

Gtr 2.

Gtr 2.

Strumming Pattern

4/4

↓ γ ↓↑ γ ↑↑ | ↓ γ ↓↑ γ ↑↑ | ↓ γ ↓↑ γ ↑↑ | ↓ γ ↓↑ γ ↑↑ :||

1 + 2 + 3 + 4 +

* Alternative rhythm for introduction.

BASS GUITAR

Under Pressure

Queen

Intro

Electric Bass

Electric Bass

3

E.Bs.

E.Bs.

5

E.Bs.

E.Bs.

E.Bs. 

E.Bs. 



12


E.Bs. 

E.Bs. 



17

E.Bs. 

E.Bs. 

* Alternative rhythm
for introduction.



DRUM-KIT

Under Pressure

Queen

♩ = 120

Drums



4

Open Hi-Hat



8



12



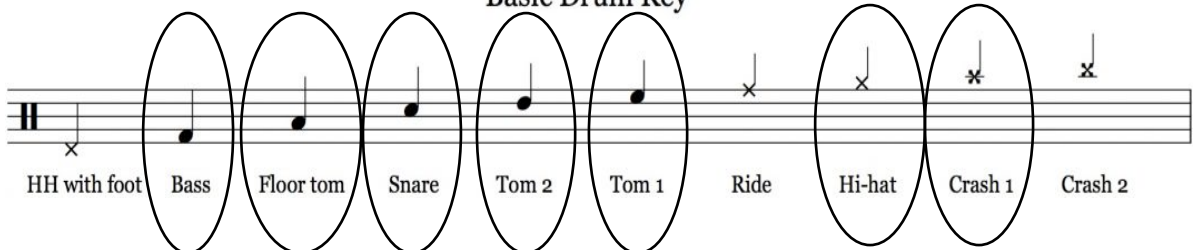
16



18



Basic Drum Key



HH with foot Bass Floor tom Snare Tom 2 Tom 1 Ride Hi-hat Crash 1 Crash 2

DRUM-KIT PART 2

Under Pressure

Queen

♩ = 120

Drums

4 Open Hi-Hat

8

12

16

18

Basic Drum Key

HH with foot Bass Floor tom Snare Tom 2 Tom 1 Ride Hi-hat Crash 1 Crash 2