

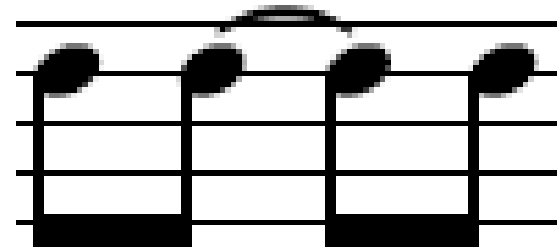


# S2 Group Performance

*Under Pressure* – Queen & David Bowie

# Starter Task:

*Can you identify the values of these tied notes?*



## **Remember:**

In music, A Tie is a line drawn between two notes that have the same name. The value of both notes are added together.

# TODAY'S LESSON

## Learning Intention

- Today we will continue to **develop** our understanding key signatures.
- To **develop** our confidence when identifying note names and rests.
- To **consolidate** our understanding of a tie.



## Success Criteria

- I have developed my understanding of key signatures and the key signature for this piece of music.
- I can confidently *identify* a Tie in music and *show* what value the tied notes add up to.

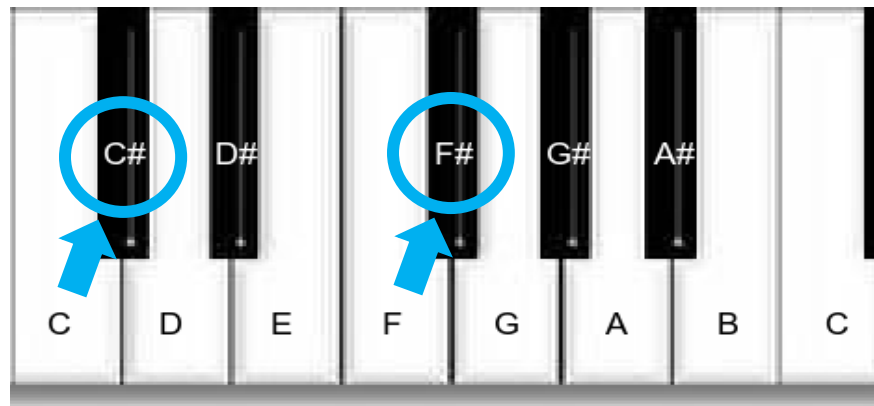
# Key Signature



D Major

A Key signature is identified at the beginning of a piece of music. Do you remember which key this piece was in?

A sharp note moves up by a *semitone*. Which notes are made sharp by this key signature?



# Music Literacy Task 1:

Remember the  
**KEY SIGNATURE.**

*What do we call the features circled below?*

9

5 D 4 4 A 3 4 G 3 3 2 1 A

13

D A G A

What do these music  
symbols mean?

# Have we been successful today?

## RECAP:



## Success Criteria

- I have developed my understanding of key signatures and the key signature for this piece of music.
- I have confidently identified note names, rests and understood the definition of a tie.

