

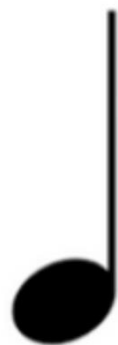
S2 Group Performance

Seven Nation Army – The White Stripes



Starter Task

Can you *identify* these note values?



1 beat



2 beat



**1 + 1/2
beats**



1 rest

Today's lesson...

Learning Intention

- Today we will *discuss* the main rhythm used in the piece

Seven Nation Army

and learn how to perform it.



Success Criteria

- I can confidently *identify* note values and how they sound.



Main rhythm



Let's have a closer look at the main rhythm in **Seven Nation Army**.

Key Signature Em 3 C B
Chords - Keyboard/Guitar

Treble Clef **Time Signature** **Triplet**

The image shows a musical staff with a treble clef, a key signature of one sharp (F#), and a 4/4 time signature. The melody consists of a dotted quarter note followed by an eighth note, then a triplet of eighth notes, and finally a quarter note. The chords Em, C, and B are indicated above the staff. A yellow arrow points to the triplet notation.

Triplet

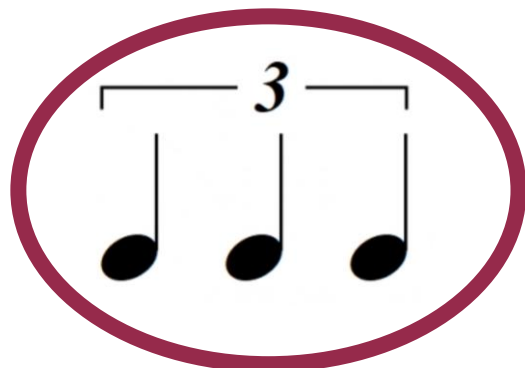


Let's have a closer look at the triplet rhythm in **Seven Nation Army**.



A triplet can be 3 notes of equal length within 1 beat

OR



3 notes of equal length within 2 beats

Triplet



Let's have a closer look at the triplet rhythm in **Seven Nation Army**.

GROUP 1

Musical notation for Group 1: A treble clef staff in common time (C) containing a triplet of eighth notes. The first triplet is labeled with a '3' above it and corresponds to the lyrics 'STRAW - BER - RY'. The second triplet is also labeled with a '3' above it and corresponds to the lyrics 'STRAW - BER - RY'.

GROUP 2

Musical notation for Group 2: A bass clef staff in common time (C) containing a triplet of eighth notes. Each note is marked with an 'x' above it. The lyrics 'TEA TEA TEA TEA' are written below the staff, aligned with the notes.

Main rhythm



Let's have a closer look at the main rhythm in **Seven Nation Army**.

Em 3 C B

The image shows a musical staff with a treble clef, a key signature of one sharp (F#), and a 4/4 time signature. The melody consists of the following notes: a dotted quarter note on G4, an eighth note on A4, a quarter note on B4, a quarter note on A4, a quarter note on G4, a quarter note on F#4, a quarter note on E4, and a quarter note on D4. Above the staff, the chords Em, C, and B are indicated. A bracket with the number '3' is placed over the first three notes (G4, A4, B4), indicating a triplet. The notes are: G4 (dotted quarter), A4 (eighth), B4 (quarter), A4 (quarter), G4 (quarter), F#4 (quarter), E4 (quarter), D4 (quarter).

Did we achieve our SC?

Recap

Success Criteria

- I can confidently *describe* and *recognise note values* and *rhythms* within a piece of music.

